



REYNOLDA

ELECTRIC COMPANY, INC.

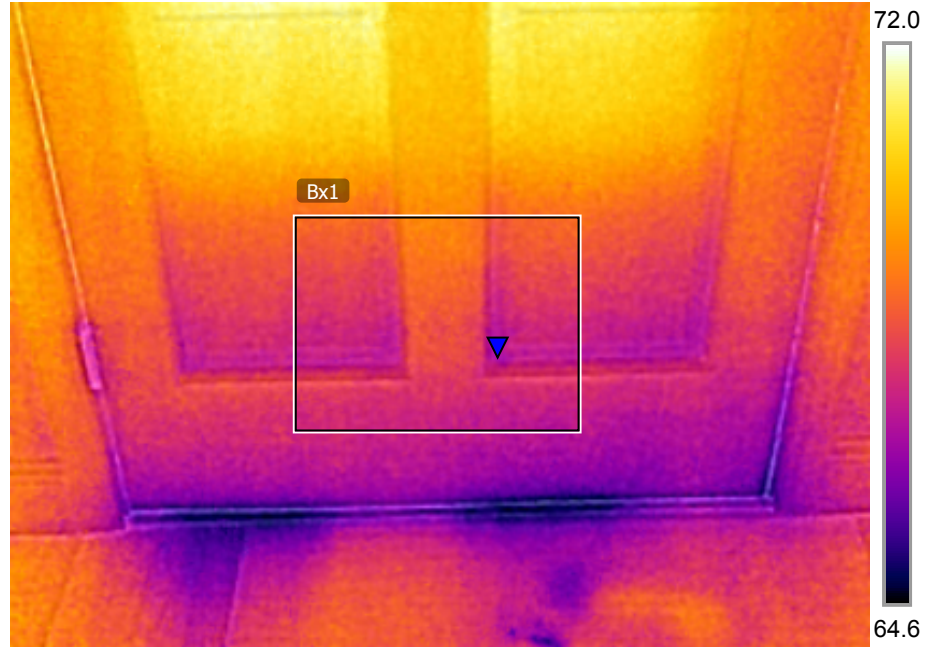
Measurements

Bx1	Min	66.9 °F
-----	-----	---------

Parameters

Emissivity	0.95
Refl. temp.	68 °F
Distance	3.3 ft
Atmospheric temp.	68 °F
Ext. optics temp.	68 °F
Ext. optics trans.	1
Relative humidity	50 %

6/19/2013 4:18:48 PM



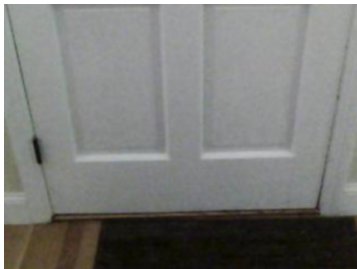
Cold air exfiltrating from in... FLIR E8 63900288

6/19/2013 4:18:48 PM



Cold air exfiltrating from in... FLIR E8 63900288

5/21/2019 5:24:26 PM



Cold air ex...