



REYNOLDA

ELECTRIC COMPANY, INC.

Measurements

Sp1	80.0 °F
Sp2	98.6 °F
Sp3	97.5 °F

Parameters

Emissivity	0.9
Refl. temp.	68 °F
Distance	2 ft
Atmospheric temp.	65 °F
Ext. optics temp.	68 °F
Ext. optics trans.	1
Relative humidity	50 %

Geolocation

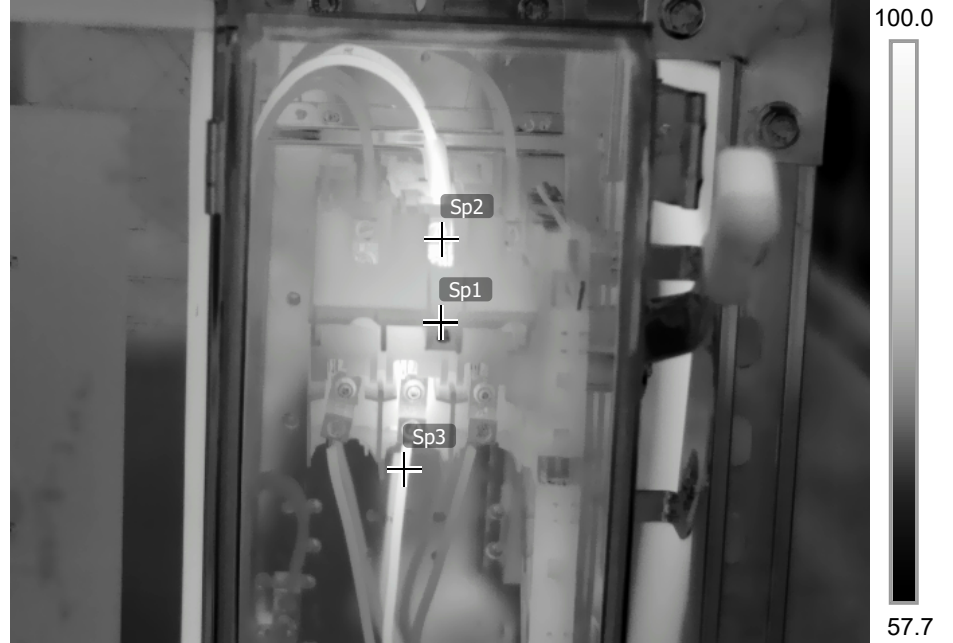
Compass	321° NW
Location	N 36° 5' 9.66", W 80° 13' 8.80"

<http://maps.google.com?z=17&t=k&q=36.0860,-80.2191>

Note

Fmx 218 thomas wtp, operate switch and clean blade

2/20/2018 4:01:38 PM

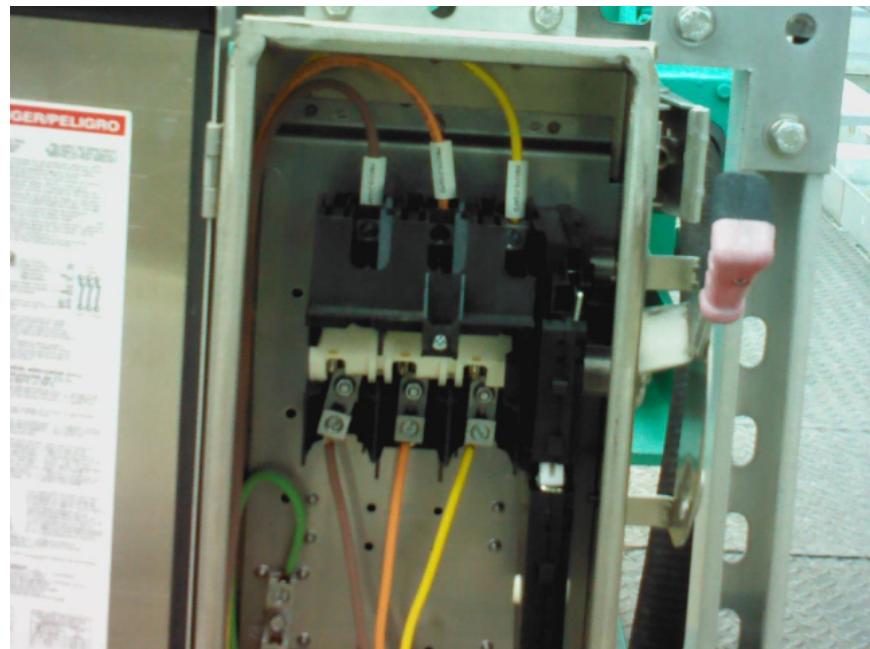


FLIR0022.jpg

FLIR T620

55911055

2/20/2018 4:01:38 PM



FLIR0022.jpg

FLIR T620

55911055