



# REYNOLDA

ELECTRIC COMPANY, INC.

## Measurements

Sp1	118.1 °F
Sp2	90.7 °F

## Parameters

Emissivity	0.9
Refl. temp.	68 °F
Distance	2 ft
Atmospheric temp.	65 °F
Ext. optics temp.	68 °F
Ext. optics trans.	1
Relative humidity	50 %

## Geolocation

Compass	196° S
---------	--------

## Note

Finishedwater pump fwp 303 replace fuse holder Swann WTP

2/20/2018 10:27:25 AM

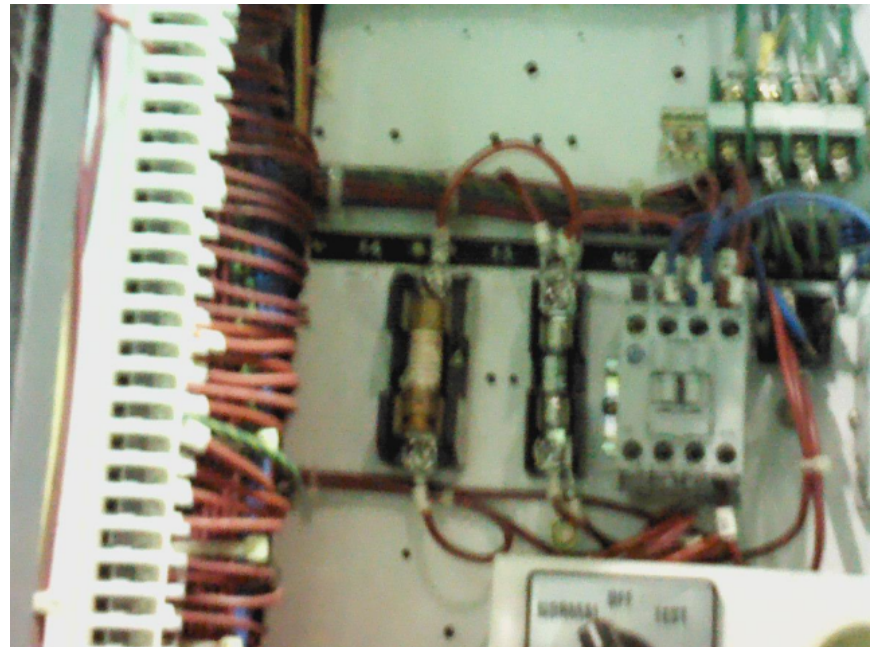


FLIR0016.jpg

FLIR T620

55911055

2/20/2018 10:27:25 AM



FLIR0016.jpg

FLIR T620

55911055